

JOINT SHAFT REMOVAL/INSTALLATION

B3E031325700W02

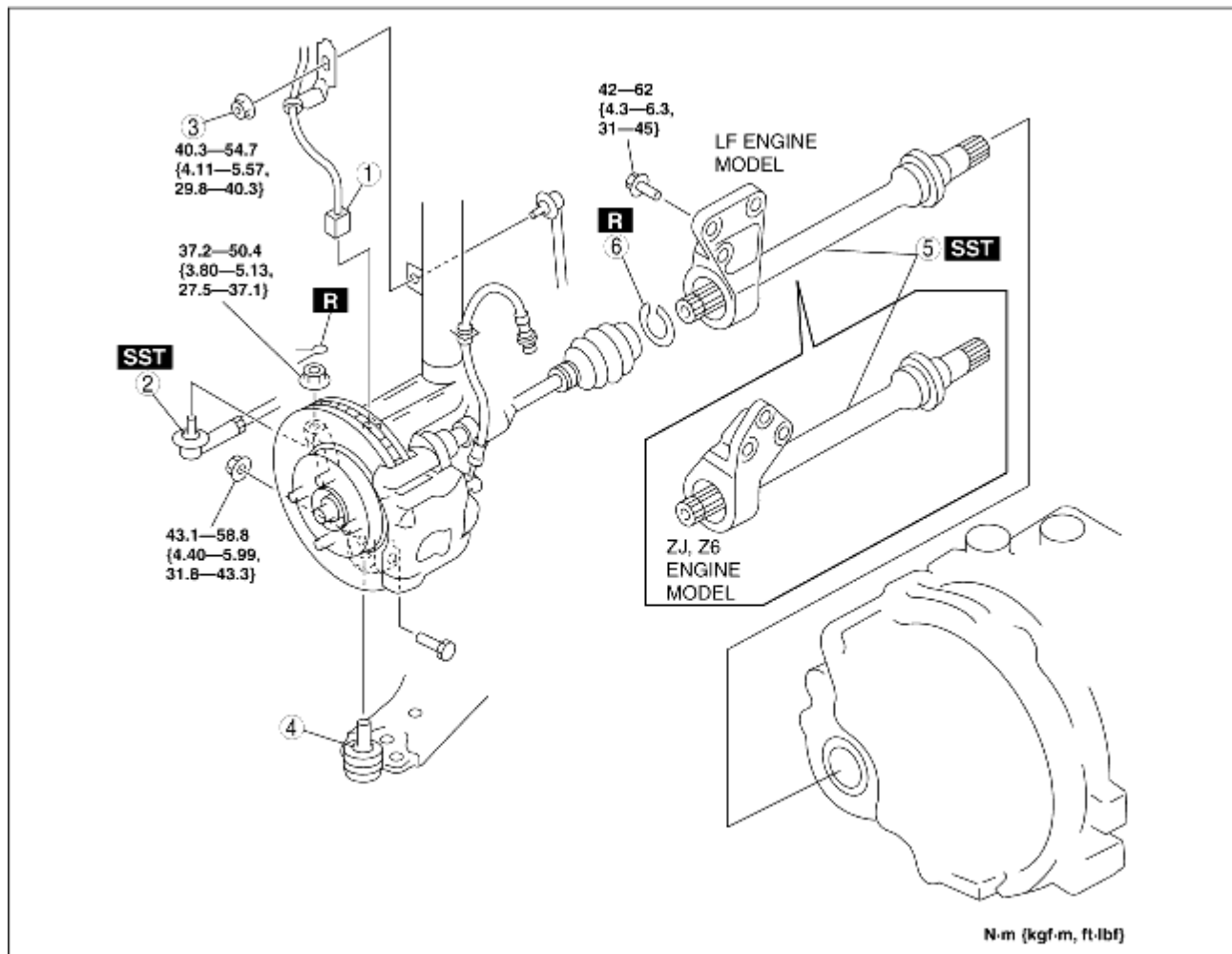
Caution

- Performing the following procedures without first removing the ABS wheel-speed sensor may possibly cause an open circuit in the wiring harness if it is pulled by mistake. Before performing the following procedures, remove the ABS wheel-speed sensor (axle side) and fix it to an appropriate place where the sensor wiring harness will not be pulled by mistake while servicing the vehicle.

1. Drain the transaxle oil. (See [TRANSAXLE OIL REPLACEMENT \[F35M-R\]](#).) (See [AUTOMATIC TRANSAXLE FLUID \(ATF\) REPLACEMENT](#).)

2. Remove in the order indicated in the table.

3. Install in the reverse order of removal.



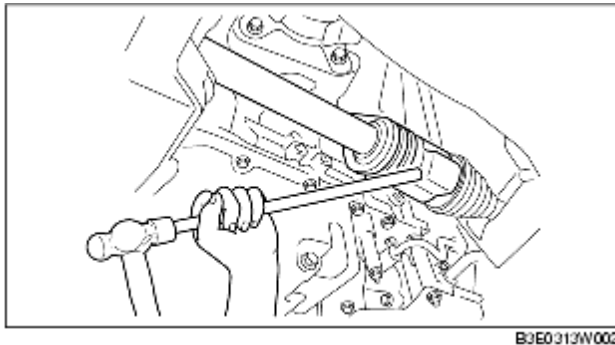
B3E0313W019

1	ABS wheel-speed sensor connector
2	Tie-rod end ball joint (See FRONT CROSSMEMBER REMOVAL/INSTALLATION .)

3	Stabilizer control link upper nut
4	Front lower arm ball joint
5	Joint shaft (See Joint Shaft Removal Note.)
6	Clip (See Clip Installation Note.)

Joint Shaft Removal Note

1. Disconnect the drive shaft (RH) from the joint shaft by tapping the transaxle side outer ring with a brass bar and hammer.

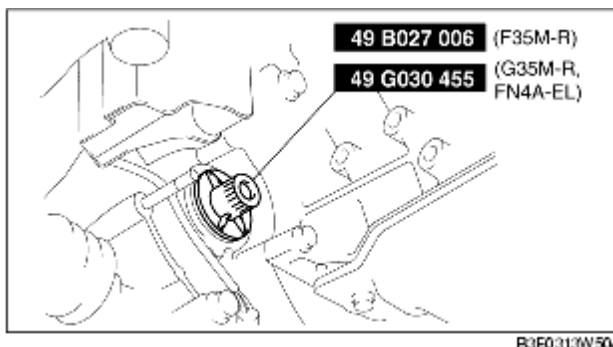


2. Disconnect the joint shaft bracket from the cylinder block and remove the joint shaft.

Caution

- The sharp edges of the joint shaft can slice or puncture the oil seal. Be careful when removing the joint shaft from the transaxle.

3. Install the **SST** to the transaxle after the joint shaft is removed.



Clip Installation Note

1. Install a new joint shaft clip to the clip groove at the end of the joint shaft with the clip opening facing upward and the clip width within the specification.

2. After installation, measure the outer diameter.

- If it exceeds the specification, repeat installation using a new clip.

Standard
31.2 mm {1.23 in} or less